

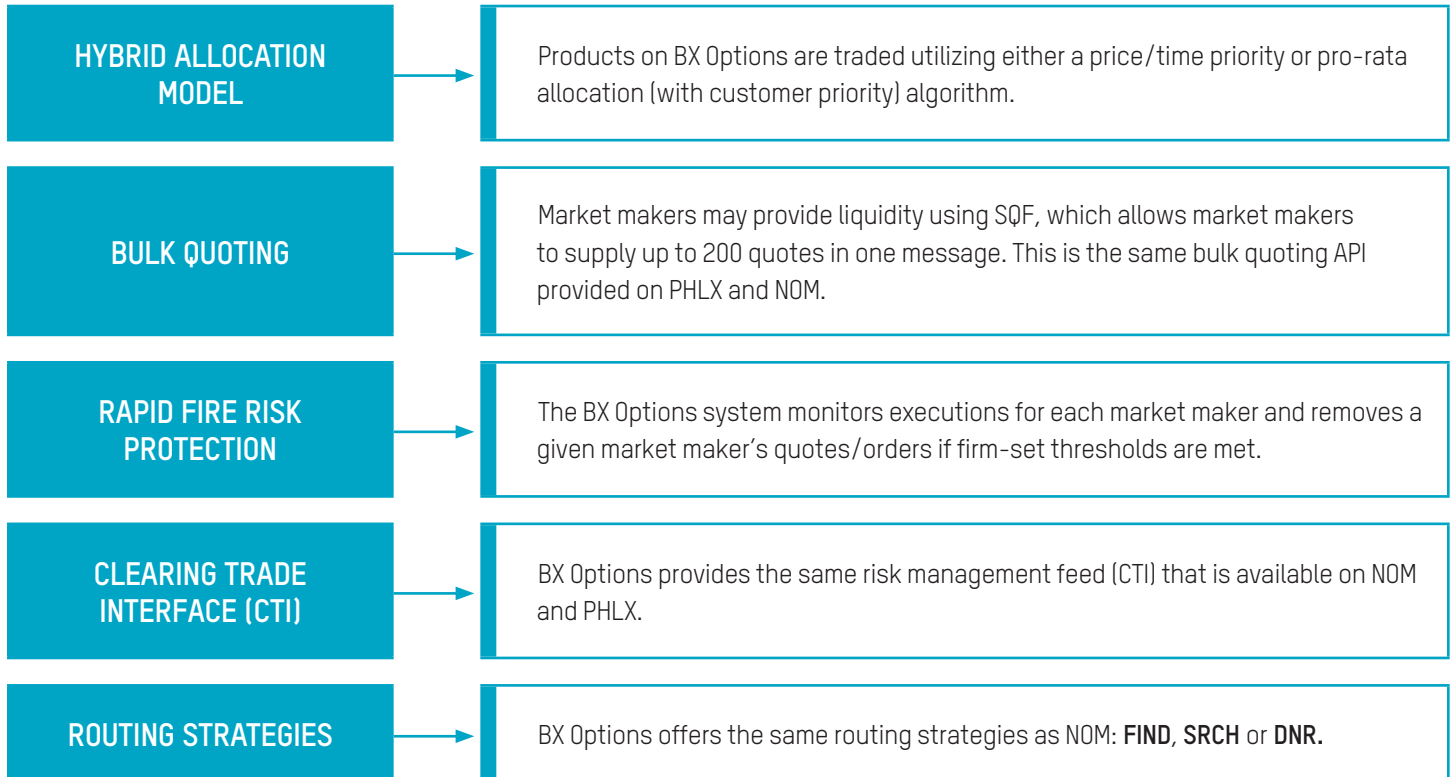
# BX OPTIONS

NASDAQ OMX BX Options<sup>SM</sup> brings fresh innovation to the industry by providing a destination geared towards retail order flow. As with The NASDAQ Options Market (NOM) and NASDAQ OMX PHLX (PHLX), market makers are the main liquidity providers supporting this market.

BX Options shares the same common architecture utilized by NOM and PHLX. Participants on the BX Options market are able to leverage their current connectivity to NASDAQ and only need new logically separate BX Options ports. The interface specifications for BX Options are identical to the SQF, FIX, and CTI interfaces on NOM.

## FUNCTIONALITY

BX Options launched in June 2012 with the same functionality as NOM. Later in 2012, BX Options launched additional functionality. The current functionality includes:



---

## CONNECTIVITY

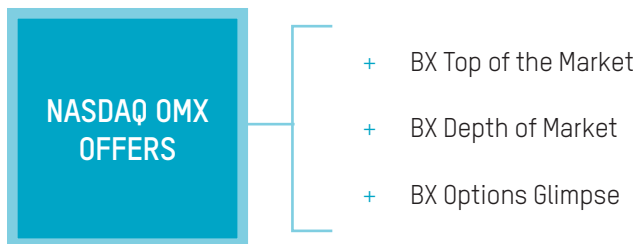
BX Options can be accessed via the following protocols:

- ▶ FIX (common FIX specification for BX Options and NOM)
- ▶ Specialized Quote Interface (SQF – common specification across BX Options, NOM, and PHLX)

---

## MARKET DATA

NASDAQ OMX offers the following proprietary data products that support BX Options participants:



The interface specifications for the BX Options data feeds are identical to the ITTO and BONO interfaces on NOM.

To subscribe to any of our market data products, please contact your [NASDAQ OMX Global Data Products Account Manager](#) at +1 301 978 5307 or visit the [Global Data Products Administration page](#) to complete the appropriate agreements and forms.

---

## MEMBERSHIP

The membership/participant application process is the same as current practices on the NASDAQ Stock Market and NASDAQ Options Market. All paperwork should be submitted to the NASDAQ OMX Membership Department:

ATTN: Deborah Siluk  
**NASDAQ OMX BX**  
Membership Department  
1735 K Street, NW  
Washington, DC 20006-1506

**BX MEMBERSHIP APPLICATION PROCESSING**  
Fax: +1 202 728 8341

**DOCUMENTS MAY ALSO BE SUBMITTED IN PDF FORMAT VIA EMAIL TO:**  
[Membership@nasdaqomx.com](mailto:Membership@nasdaqomx.com)

---

## CONTACTS

[WWW.NASDAQOMXTRADER.COM/BXOPTIONS](http://WWW.NASDAQOMXTRADER.COM/BXOPTIONS) | [DATASALES@NASDAQOMX.COM](mailto:DATASALES@NASDAQOMX.COM) | +1 800 846 0477